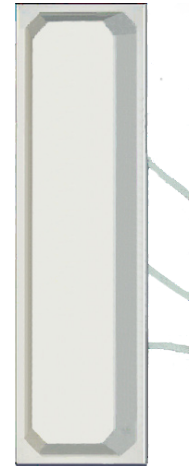




ARUBA AP-ANT-16 INDOOR MIMO 2.4-2.5 GHZ AND 4.9-5.9 GHZ CEILING MOUNT ANTENNA

AP-ANT-16 is a dual-band 3-element omni-directional antenna for use in 802.11n MIMO applications. Housed in a compact, low-profile PVC/Acrylic Radome, the antenna can be mounted to a variety of drop ceiling grids using the integrated spring clips. Each of the three MIMO antenna elements is connected to the Aruba Access Point via a low-loss, plenum-rated coax pigtail. The radiation patterns are uniform and symmetrical, providing high-level signal density into defined coverage zones. This antenna will greatly enhance the performance of 802.11n systems. The dual-band frequency coverage means that a single type of antenna can be deployed with any MIMO radio in the 2.4-2.5 and 4.9-5.9 GHz bands.



As a multi-antenna array, the AP-ANT-16 can be used with a single AP-124 to provide full dual-band 802.11a/b/g/n MIMO coverage or the three elements can be used individually or in combination to provide diversity/non-diversity coverage with legacy 802.11a/b/g access points.

FREQUENCY / GAIN

- 2.4-2.5 GHz (3.9 dBi)
- 4.9-5.9 GHz (4.7 dBi)

POLARIZATION

- Vertically polarized omni-directional

BEAMWIDTH

- E-plane (Elevation): 60 degrees (centered at +/-45 degrees down angle)
- H-plane (Azimuth): Omni-directional

IMPEDANCE

- 50 ohms

MAXIMUM INPUT POWER

- 2 watts

VSWR (MINIMUM PERFORMANCE)

- < 2.0:1

DIMENSIONS (MM)

- 308.2 x 92 x 22

HOUSING

- ASA

FLY CABLE LENGTH / CONNECTOR

- 36" / RP-SMA (3x)

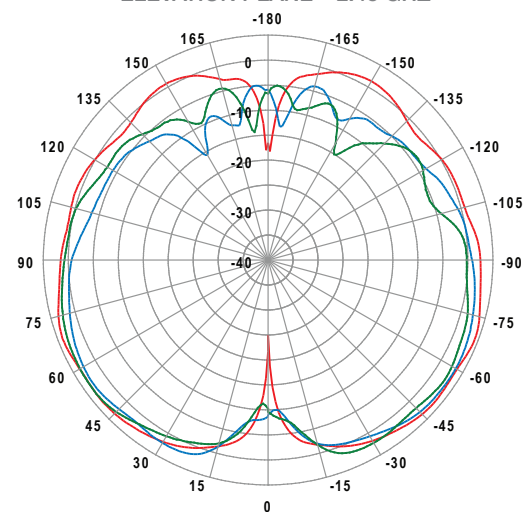
OPERATING TEMPERATURE

- -40° C to +70° C

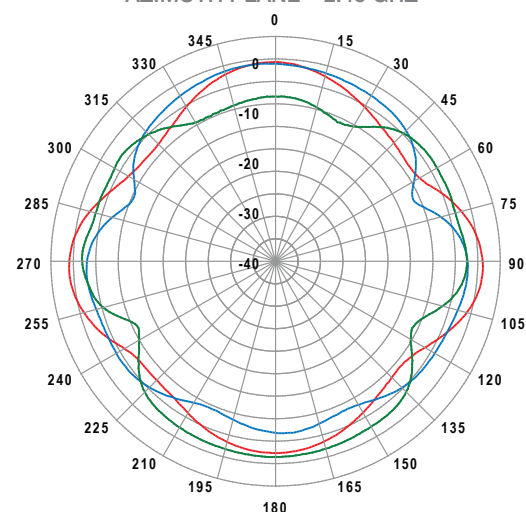
INSTALLATION HARDWARE

- Ceiling 15/16" T-bar mounting clips included

ELEVATION PLANE – 2.45 GHZ



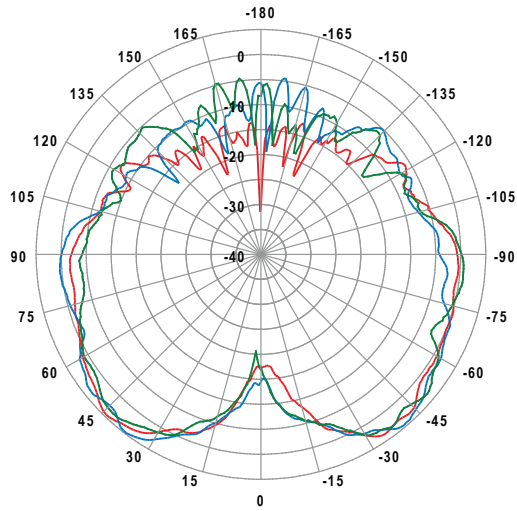
AZIMUTH PLANE – 2.45 GHZ



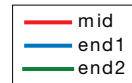
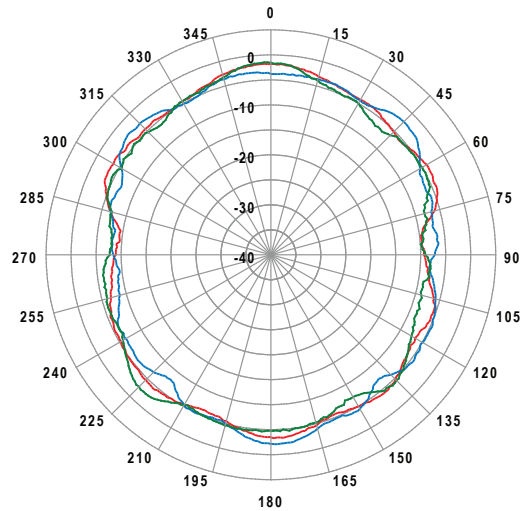
— mid
— end1
— end2

ARUBA AP-ANT16 INDOOR MIMO ANTENNA

ELEVATION PLANE – 5.47 GHZ



AZIMUTH PLANE – 5.47 GHZ



WWW.ARUBANETWORKS.COM

1344 Crossman Avenue, Sunnyvale, CA 94089 | Tel. +1 408.227.4500 | Fax. +1 408.227.4550