

ARUBA 620 BRANCH OFFICE CONTROLLER



The Aruba 620 Branch Office Controller is a compact, cost-effective all-in-one networking solution. The 620 includes a firewall, wireless LAN controller, and nine-port Ethernet switch supporting four PoE+ ports. Aruba's centralized, zero-touch configuration and management model enables the 620 branch office controller to be deployed, monitored and controlled without any local IT staff. Additional deployment options include remote management or local configuration via a web interface.

The 620 branch office controller uses central controllers in the data center to manage complex and processing-intensive management and security functions. Edge services are virtualized and implemented in cost-effective edge devices like the 620 branch office controller, which move user traffic to data center controllers through secure IP tunnels over a public or private transport network. The 620 branch office controller provides local wireless services when used in conjunction with any Aruba access point (AP), or it can operate as a wired-only device. The 620 branch office controller also includes print server and network-attached storage capabilities to enable local network printing and mass storage.

Running the ArubaOS operating system, the 620 branch office controller comes standard with advanced authentication, encryption, wireless radio management and L2/L3 networking features. Optional ArubaOS software modules deliver additional

functionality including RFProtect Wireless Intrusion Protection and Spectrum Analyzer, Policy Enforcement Firewall (PEF), and the FIPS-compliant xSec Layer 2 protocol, which provides a unified framework to secure all wired and wireless connections using strong encryption and authentication.

CONTROLLER PERFORMANCE AND CAPACITY

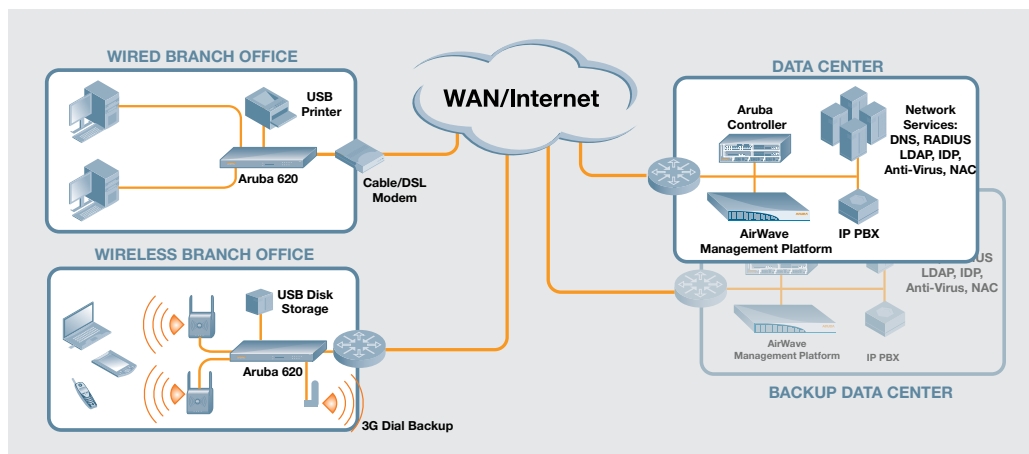
- LAN-connected Access Points (Maximum): 8
- Remote Access Points (Maximum): 32
- Wired Access Points (Maximum): 1
- Users (Maximum): 256
- MAC addresses: 2,048
- VLAN IP interfaces: 128
- Active firewall sessions: 8,192
- Concurrent IPsec tunnels: 128
- Firewall throughput: 800 Mbps
- Encrypted throughput (3DES): 400 Mbps
- Encrypted throughput (AES-CCM): 320 Mbps
- System BSSIDs: 128

INTERFACES

- Console (RS-232) RJ-45: 1
- Fast Ethernet (10/100BASE-T): 4
- Fast Ethernet (10/100BASE-T) with PoE+: 4
- Gigabit Ethernet (1000BASE-T): 1
- ExpressCard®: 1
- USB 2.0: 1

WARRANTY

- Hardware: 1 year parts/labor*
 - Software: 90 days*
- * Extended with support contract



USB DEVICE SUPPORT

- Maximum concurrent printers: 2
- Maximum concurrent HSDPA/GPRS/EDGE/EVDO Modems: 2
- Maximum concurrent storage media (Hard disk/Flash): 4
- Maximum concurrent devices (all types): 4

NETWORK PRINTING

- Printing mode: Raw
- Printer driver download to clients: No
- Client compatibility: MS Windows, MacOS, Unix

NETWORK ATTACHED STORAGE

- File protocol: CIFS/SMB
- Share-level security: No
- User-level security: No
- Per-role firewall restriction of share access: Yes
- Client compatibility: MS Windows, MacOS, Unix
- USB 1.0 devices: Yes
- USB 2.0 flash storage: Yes
- USB 2.0 disk storage: Yes
- Maximum storage size: 1TB
- Ext2/Ext3 Filesystem: Yes
- FAT16 Filesystem: Yes
- FAT32 Filesystem: Yes
- NTFS Filesystem: No

POWER SPECIFICATIONS

- AC Input Voltage: 100-240 V, Universal Input
- AC Input Frequency: 50-60 Hz
- Maximum power consumption: 115 Watts
- Power over Ethernet total capacity: 78 Watts
- Power over Ethernet capacity per port: 19.5 Watts

OPERATING SPECIFICATIONS AND DIMENSIONS

- Operating temperature range: 0° C to 40° C (32° to 104° F)
- Storage temperature range: 0° C to 50° C (32° to 122° F)
- Humidity, non-condensing: 5% to 95%
- Height: 1.75" (45 mm)
- Width: 12.6" (320 mm)
- Depth: 6.8" (173 mm)
- Weight: 2.7 lbs/1.23 kgs (unboxed)

COMPATIBLE USB MODEMS

The following is a partial list of tested and fully supported USB modems. Some modems not on this list may be fully supported with factory-default configuration, while others may require controller configuration in order to function. An updated list can be found at http://www.arubanetworks.com/usb_devices.

- Novatel U727
- Kyocera KPC680
- Compass 597
- USBConnect Quicksilver
- USBConnect Mercury

COMPATIBLE USB PRINTERS

The following is a partial list of tested and fully supported USB printers. Some printers (such as the HP LaserJet 1000 series) require a firmware upload each time they are powered on. These printers are currently not supported. An updated list can be found at http://www.arubanetworks.com/usb_devices.

- HP Deskjet 6988 Printer
- HP LaserJet M1522nf MFP
- HP Officejet Pro L7590 All-in-One Printer, Fax, Scanner, Copier
- HP LaserJet P3005
- HP Color LaserJet CP3505
- Lexmark X7675 Professional
- Lexmark T640
- Lexmark C534dn

COMPATIBLE USB STORAGE

The following is a partial list of tested and fully supported USB storage devices. An updated list can be found at http://www.arubanetworks.com/usb_devices.

- Seagate FreeAgent Pro hard drive
- Maxtor OneTouch 4 Plus hard drive
- My Passport Essential WDME3200 hard drive
- Iomega eGo Desktop hard drive
- Iomega Desktop Hard Drive hard drive
- Kingston DataTraveler 100 USB flash drive (2/4/8G)
- SanDisk Cruzer Micro USB flash drive (2/8G)

REGULATORY AND SAFETY COMPLIANCE

- FCC Part 15 Class B
- EN 55022 Class B
- EN 55024
- IEC/EN 60950
- CE Marking
- cTUVus Marked
- CB Scheme Certified

For a complete list of Country Specific Regulations please speak with your Aruba Representative.

Ordering Information

Part Number	Description
620	Aruba 620 Branch Office Controller, 0 AP Support, Unrestricted Regulatory Domain
620-US	Aruba 620 Branch Office Controller, 0 AP Support, Restricted Regulatory Domain – US
620-IL	Aruba 620 Branch Office Controller, 0 AP Support, Restricted Regulatory Domain – IL
620-4	Aruba 620 Branch Office Controller, 4 AP Support, Unrestricted Regulatory Domain
620-4-US	Aruba 620 Branch Office Controller, 4 AP Support, Restricted Regulatory Domain – US
620-4-IL	Aruba 620 Branch Office Controller, 4 AP Support, Restricted Regulatory Domain – IL



www.arubanetworks.com

1344 Crossman Avenue, Sunnyvale, CA 94089

1-866-55-ARUBA | Tel. +1 408.227.4500 | Fax. +1 408.227.4550 | info@arubanetworks.com