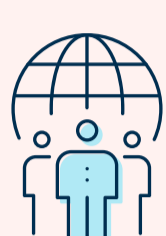




# MODERNIZE YOUR NETWORK AND LOWER YOUR CARBON FOOTPRINT

Are rising energy prices, frequent environmental events, and increases in governmental ESG (Environmental, Social, and Governance) requirements keeping you up at night? You are not alone. Building a strategy to lower carbon emissions is a top priority for many companies.

## THE INCREASING IMPORTANCE OF SUSTAINABILITY



**58%** of Global Fortune 200 companies have named a sustainability lead<sup>1</sup>



**55%** have established greenhouse gas emission targets<sup>2</sup>



## DO YOU HAVE THE POWER TO SAVE?

The network is the backbone of every organization. The more efficient the network, the less resources it will use. The way network components are made, how they work and how they're used go a long way to lowering the carbon footprint of your operations.



### HOW THEY'RE MADE

Intelligent design & production



### HOW THEY WORK

Innovation for efficient operations



### HOW THEY'RE USED

Streamlined workflows & extended use cases

## HOW THEY'RE MADE

Every aspect of the design and production of Aruba products is carefully considered to minimize environmental impacts across the product lifecycle.



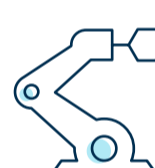
Zero heavy metals or ozone depleting components

Low-halogen PCBs in new & existing products\*



Designed to be easily recycled

Manufacturing practices follow the HPE Environmental Standard



Packaging comprised of up to 80% recycled

## HOW THEY WORK

Aruba is investing in the innovation of sustainability-friendly features that virtualize processes, optimize power utilization, increase efficiency, and lower overall power consumption.



Intelligent power management features on access points minimizes average power consumption to approximately **50%**<sup>3</sup>



**Smaller real estate footprint** with unified network management hosted in power-efficient cloud data centers



Energy Efficient Ethernet & 80+ certified power supplies on switch products reduce power consumption during low data activity by **50%+** and **80%+**, respectively



Up to **75%** fewer help desk tickets with data-rich AI-automation that reduces network anomalies and associated power consumption

## HOW THEY'RE USED

Aruba's network architecture enables you to empower workforce productivity, optimize IT resources, and drive better resource management.



**Eliminate onsite IT visits** with zero-touch provisioning and remote management



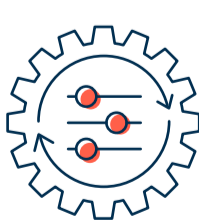
**Reduce commute emissions** with secure work-from home solutions



**650g CO2** saved per kilometer not driven



**Eliminate overlay hardware** and lifecycle management by connecting IoT devices to APs via Bluetooth, Zigbee, USB & PoE



**Optimize and manage resource usage** with integrated technology partner smart workplace solutions

Aruba is committed to advancing the way our customers live and work, adopting design and manufacturing principles, and delivering innovative solutions that maximize IT efficiency and minimize the impact on our planet.

**For more information, visit**

[www.arubanetworks.com/solutions/sustainability](http://www.arubanetworks.com/solutions/sustainability)

<sup>1,2</sup>The State of Environmental Sustainability in the Fortune Global 200, Forrester Research, January 2021

<sup>3</sup> Average power consumption compared to total power capacity based on over 30 million records of the most widely used access points operating in live Aruba Central deployments